

CROP Stainless steel buckle

Tooth type

201/304/316 Stainless Steel 100PCS/BOX

ModelNo.	For band width		Thickness mm
	inch	mm	
STE-Y14	1/4	6.35	0.8
STE-Y38	3/8	9.53	1.0
STE-Y12	1/2	12.70	1.2
STE-Y58	5/8	15.88	1.2
STE-Y34	3/4	19.05	1.5
STE-Y1	1	25.40	1.8
STE-Y114	1 1/4	32.50	2.0

General Buckle



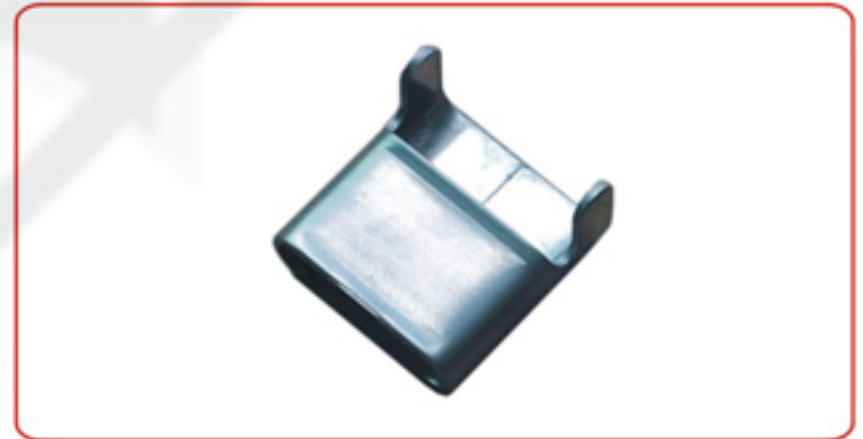
Giant Buckle



L type

201/304/316 Stainless Steel 100PCS/BOX

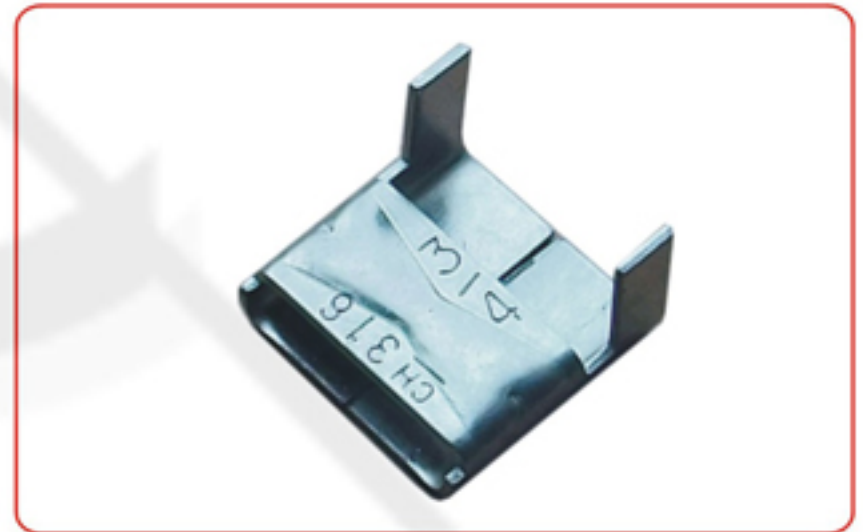
ModelNo.	For band width		Thickness mm
	inch	mm	
STE-L14	1/4	6.35	0.6
STE-L38	3/8	9.53	0.7
STE-L12	1/2	12.70	0.7
STE-L58	5/8	15.88	0.8
STE-L34	3/4	19.05	1.0



LX type

201/304/316 Stainless Steel 100PCS/BOX

ModelNo.	For band width		Thickness mm
	inch	mm	
STE-LX14	1/4	6.35	0.6
STE-LX38	3/8	9.53	0.7
STE-LX12	1/2	12.70	0.7
STE-LX58	5/8	15.88	0.8
STE-LX34	3/4	19.05	1.0



Screw type

Pkg. Qty-50 for YQBS14&YQBS38 25 for YQBS12/58/34

ModelNo.	For band width		Thickness mm
	inch	mm	
STE-S14	1/4	6.35	1.5
STE-S38	3/8	9.53	1.8
STE-S12	1/2	12.70	2.0
STE-S58	5/8	15.88	2.5
STE-S34	3/4	19.05	2.5

